



# COMPANY PROFILE

55 Richards Dr. Thales Office Park  
Halfwayhouse, Midrand  
1685



# TABLE OF CONTENTS

WHO WE ARE TODAY \_\_\_\_\_ 1

EFFECTIVE PLANNING, EFFICIENT DESIGN AND  
QUALITY CONSTRUCTION \_\_\_\_\_ 2

- VISION
- MISSION
- CORE VALUES

SERVICES \_\_\_\_\_ 3

## WHO WE ARE

Roelwa (Pty) Ltd is a newly established 100% Black Women owned Entity with expertise in a wide range of sectors, offering services within the South African and African region. We believe in transformation and empowerment and therefore it is our mission to empower the previously disadvantaged communities, especially the youth.

We wish to develop meaningful partnerships and to provide services to meet our client's financial and operational needs. We are passionate about our client's projects and we take pride in the level of service we provide to all our clients.

We have capabilities and experience with highly skilled and qualified professionals with successful backgrounds within their respective sectors.

We always ensure high level of Safety in our Projects. Roelwa (PTY) LTD has a solid management team led by highly experienced people that are hungry for excellence and competent staff that will always do their best to provide outstanding



# EFFECTIVE PLANNING, EFFICIENT DESIGN AND QUALITY CONSTRUCTION

## VISION

To become a strategic partner of choice in both the private and public sectors.

## MISSION

- To continually develop strategies that align to our vision and promote business growth
- To ensure that every project undertaken is executed promptly, safely, efficiently and aligns with the customers' needs and vision
- To provide sustainable solutions to our customers at fair and market competitive prices
- To participate in job creation and contribute to socio-economic development

## CORE VALUES

- Safety: We have a dedicated safety and precautions team to ensure a conducive and safe working environment for all.
- Ethics: We maintain high ethical standards at all times - Honesty, respect, integrity, and fairness is at the heart of our business.
- Customer experience: We treat each customer as family.
- Teamwork: We collaborate resources and talent in order to achieve a common goal.



Roelwa Pty LTD

# SERVICES



## Civil Engineering includes:

We offer a full range of civil engineering services, from large-scale earthworks and infrastructure projects to residential developments and parking areas. In addition, we offer bulk earthworks, road construction, pipelines, utility services installation, road rehabilitation, commercial and residential developments.

## Project Management includes:

We undertake the comprehensive construction of projects - Project Initiation, Concept and Viability, Design Development, Documentation and Procurement, Construction Monitoring and Closeout



---

## Facilities Management

We undertake a wide variety of building maintenance services in the Residential, Commercial, and Industrial spheres. These include:

- Upgrade of Bathrooms, Kitchens & other Facilities
- Repair of Joinery items
- Re-Painting of Buildings
- Extensive range of Plumbing activities
- Extensive range of electrical installation activities
- All Types of Handyman service
- Replacement of Floor Coverings
- Glazing of Broken windows
- Patching of Holes in walls
- Brickwork repair
- Graffiti Removal & Application of Protective Coatings
- Repair of Fire Damage & Fire safety upgrades
- Repair of roof leak

## Paving Work

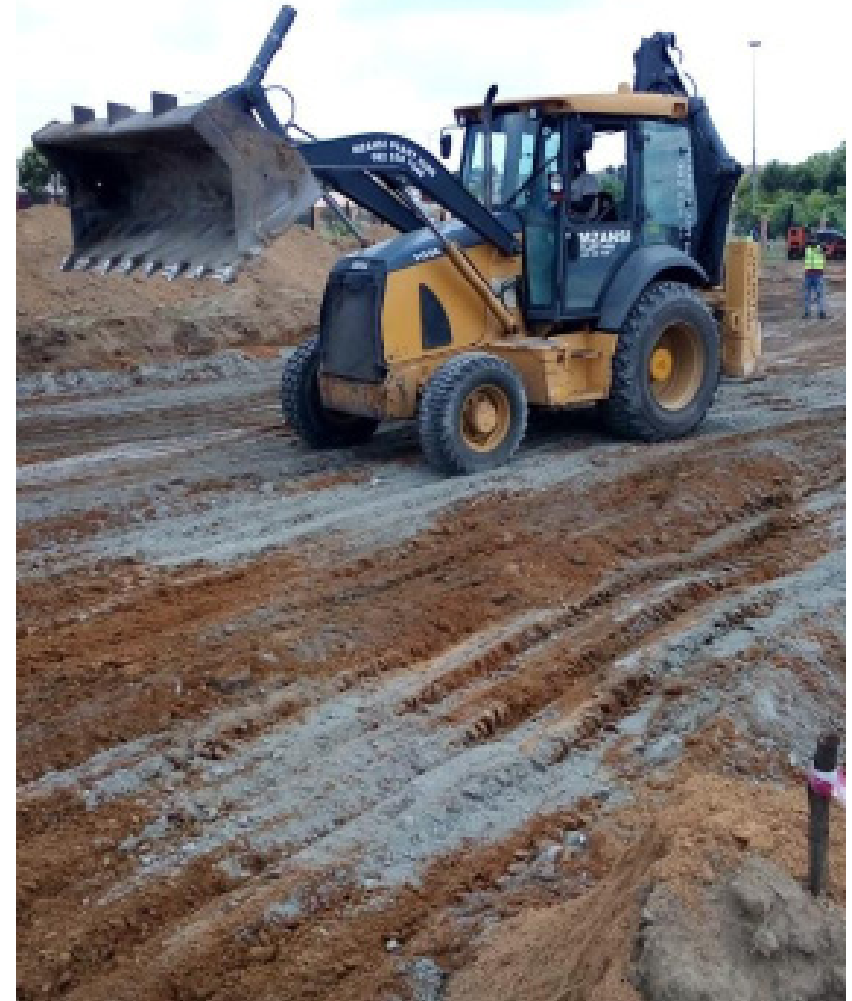
We perform construction and repairs of pavements for driveways, patios, pools, walkways, commercial and industrial facilities. With a large variety of design options available, we are able to deliver on your specific requirements.





## Plant and Equipment Hire includes:

- 20- and 35-Ton Excavators
- 6m<sup>3</sup> and 10m<sup>3</sup> Tipper Trucks
- Water Bowers
- Bobcat Tractor-Loader-Backhoe (TLB)
- Compactors
- Articulated Dump Trucks



## SUPPLY OF MOBILE CLASSES

Dilopye Prevocational School  
Dominican School for the Def  
Norkem Park High School  
N'wanati High School  
Bjmnyanda P School



**Bjmnyanda P School**



**N'wanati High School**

# MOBLIE OFFICE

Umsimbithi Mining



# NORKEN PARK TOWN

CONSRTUCTION OF 222 UNITS



## References

Client	Motseg Pty Ltd	Client	Dilopye Prevocational School
Industry	Private Sector	Industry	Department of Education
Location	Pretoria	Location	Dilopye
Job Spec	Supply of Protective Clothing	Job Spec	Supply of school uniform
Job Contact Person	Mable Ramano	Job Contact Person	Nsuku Madigaana
Job Contact Number	071 840 9440	Job Contact Number	012 707 1314/ 074 765 357
Client	Bronkhorspruit Magistrate Court Crime Court		
Industry	Department of Public Works		
Location	Bronkhorspruit		
Job Spec	Installation and Maintenance of Health & Hygiene Services		
Job Contact person	Maria Mahlatsi		
Job Contact Number	012 310 5088 / 081 031 3701		
Client	City of Tshwane Metropolitan Municipality	Client	J Kekana Secondary School
Industry	Human Settlement	Industry	Education
Location	Pretoria	Job Spec	Supply of stationery
Job Spec	Supply of Yellow Plant	Location	Mamelodi
Job Contact Person	Ntshekeng Sekane	Job Contact Person	Mrs Kolobe Lebelo
Job Contact Number	012 358 3765/071 062 3975	Job Contact Number	076 317 9951
Location	Limpopo		
Job Spec	Electrical Emergency Work		
Job Contact Person	Mosima Mametja		
Job Contact Number	083 387 1629		



Company Registration Number	2016/51663407
B-BBEE Status	Level 1 Contribution (135% Procurement Recognition)
CRS Number	
Central Supplier Database Number	MAAA0550319
Tax Reference Number	IT-9396571185 Vat-4310294386
Physical Address	3117 Ibis Drive Waterfall Country Estate Midrand 1685
Telephone Number	+27 71 880 6033
Contact Person and Designation	Pinkie Manketso Mafanywa Managing & Operation Director