

Business Profile

LIFESTYLE MINING (PTY) LTD.

Mining services and Supply.

LIFESTYLE CONNECT (Pty) Ltd
Trading as Lifestyle Mining (Pty) Ltd.



INTRODUCTION

Lifestyle Mining (Pty) Ltd. is a 100% youth owned private company. The business acts as a multi-discipline company able to execute tasks within Mining, electrical equipment and services, plant hire, rehabilitation, reclaiming, refurbishing, cleaning and gardening services. It is a company with excellent performance in technical and entrepreneurial skills, and also has established and plays a role in community development.

BACKGROUND

Lifestyle Mining (Pty) Ltd. was established by Lucky Khumalo who has an inherent love for mining having grown up in the Mining town of Emalahleni in Mpumalanga. The company began work as subcontractor to companies which are well established with the coal mining industry. We have worked largely on mining supply, reclaiming, transformer services, blasting and support, refurbishing of machinery, equipment and labour hire.

VISION

Lifestyle Mining (Pty) Ltd. seeks to be a leading provider of mining supplies and services. To create value for our clients by being reliable and efficient whenever called upon. The company also seeks to measure success through the number of jobs we are able to create hence part of our vision is to establish engineering workshops and training centers within the communities which we operate.

MISSION STATEMENT

Lifestyle Mining (Pty) Ltd. mission is to maximize the value of resources for the benefit of the clients. It is to increase the quality of service in the industry of the chosen business path for the benefit of public and private sector organizations, in the most cost effective, conservative and environmentally friendly methods, so as to foster the result of providing more skills, job creation and playing an integral part in socio-economic growth for the province and the country.



VALUES

It has been resolved that each member and future employee of Lifestyle mining undertakes to abide by the following philosophy:

- To bring quality control and operations in services for the consumer and client interface.
- To ensure that the labour force goes home safe and feeling productive and constructive in their jobs.
- To instil the culture and ethics of job creation and participation in the mainstream of the economy.
- Conduct business with honesty, integrity, transparency and diligence.
- Endeavour to provide personal service and empathy to clients across the spectrum.
- Embrace continuous improvement of operations and service through training on new work methods and keeping abreast with technological trends in production and service delivery.
- Treat all stakeholders with dignity and respect.
- Allow customers to define quality and thrive to consistently match their expectations.

AFFIRMATIVE ACTION POLICY

Lifestyle Mining (Pty) Ltd. takes full knowledge of affirmative action and will observe affirmative action and equity legislation policy as enforced by the government. This corporation's policy with regards to affirmative action reflects the sincere intention to also employ individuals that originate from previously disadvantaged groups, in the positions of directorship all the way through to the unskilled labour positions.

HUMAN RESOURCE POLICY

Lifestyle Mining (Pty) Ltd. prescribes to the labour regulations as laid down by the labour Act. A committee comprising of a fair representation of both the employees and the employer will deal with disputes. Should the matter reach a deadlock, the employee should exercise his/her rights and refer the matter to the CCMA or a relevant statutory body.

All employees of the business will sign a contract, which shall clearly state the expectations of the business and any matters relating to labour relations, code of conduct and the constitution of the business.



COMPANY OPERATIONS

The company's operations are classified in to 7 categories:

1. Supply, maintenance and repair of electrical transformers.
2. Supply, maintenance and repair of mini substations.
3. Supply and servicing of pumps and valves.
4. Supply and repair of drive train components for Trackless mining machines.
5. Emergency lighting solutions.
6. Repair of electrical motors.
7. Infrared scanning.



PRODUCT CATALOGUE

Infrared scanners used to identify faults electrical equipment.



Transformers: Our workshop at the entrepreneur village in Kya sands focuses repairing and maintaining transformers and the supply of transformer parts.

Transmissions, torque convertors and Axles for mobile mining vehicles.



VIBRATING EQUIPMENT

- Horizontal screens.
- Banana screens.
- Dewatering screens.
- Grizzly screens



Pumps



Valves



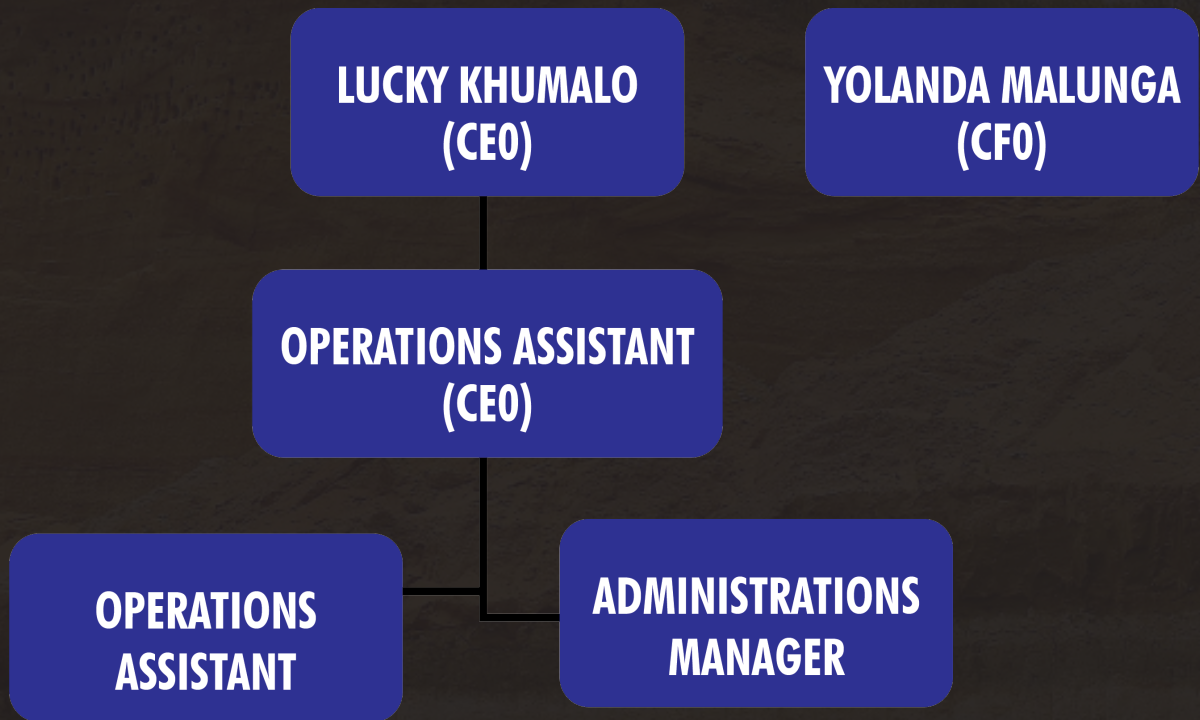
Cannon fog spraying machines for dust suppression



Lighting Plant Hire



COMPANY STRUCTURE/ ORGANOGRAM



Vendor number TRL0033

CONTACT DETAILS

Physical address:
843 Marikana West,
Northern Province,
0284

Contact numbers:
Lucky Khumalo
+27 (0) 68 558 9692

A photograph of three miners in a dark tunnel. They are wearing high-visibility yellow and blue work clothes, white hard hats, and tool belts. They are walking away from the camera on a rocky path. The tunnel walls are lined with wire mesh and have a rough, textured appearance. A large yellow pipe is visible on the left side of the frame. The lighting is dim, with some light reflecting off the workers' clothes and the tunnel floor.

LIFESTYLE MINING

Mining Services and Supply.